

# **EXHIBITION OF IMMUNOLOGY**

**14.09.2016**

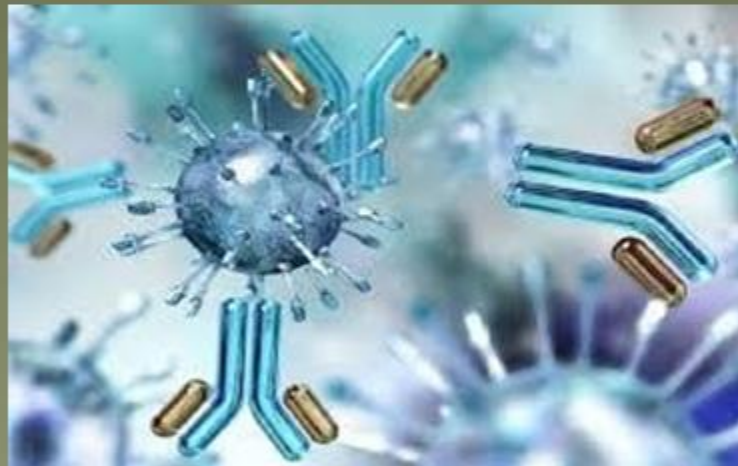
**Inaugurated by**

**Dr. K. DEVI,**

**Head, Department of Zoology**

**DKM College for Women, Vellore**

**@ Instrumentation room**



## **REPORT ON THE EXHIBITION OF IMMUNOLOGY**

**14.09.2016**

**Inaugurated by Dr. K. DEVI, Head, Department of Zoology**

The students of Microbiology department exhibited the charts and models explaining about Immunology. The key aspects of the exhibition includes

Immunology is the study of the immune system and is a very important branch of the medical and biological sciences. The immune system protects us from infection through various lines of defence. If the immune system is not functioning as it should, it can result in disease, such as autoimmunity, allergy and cancer. It is also now becoming clear that immune responses contribute to the development of many common disorders not traditionally viewed as immunologic, including metabolic, cardiovascular, and neurodegenerative conditions such as Alzheimer's.

From Edward Jenner's pioneering work in the 18<sup>th</sup> Century that would ultimately lead to vaccination in its modern form (an innovation that has likely saved more lives than any other medical advance), to the many scientific breakthroughs in the 19<sup>th</sup> and 20<sup>th</sup> centuries that would lead to, amongst other things, safe organ transplantation, the identification of blood groups, and the now ubiquitous use of monoclonal antibodies throughout science and healthcare, immunology has changed the face of modern medicine. Immunological research continues to extend horizons in our understanding of how to treat significant health issues, with ongoing research efforts in immunotherapy, autoimmune diseases, and vaccines for emerging pathogens, such as Ebola. Advancing our understanding of basic immunology is essential for clinical and commercial application and has facilitated the discovery of new diagnostics and treatments to manage a wide array of diseases. In addition to the above, coupled with advancing technology, immunological research has provided critically important research techniques and tools, such as flow cytometry and antibody technology.

An immunologist is a scientist and/or clinician who specialises in immunology. Many immunologists work in a laboratory focusing on research, either in academia or private industry

(e.g. in the pharmaceutical industry). Other immunologists – “clinical immunologists” – are clinicians who focus on the diagnosis and management of diseases of the immune system, such as autoimmune diseases and allergies.

The immune system is a complex system of structures and processes that has evolved to protect us from disease. Molecular and cellular components make up the immune system. The function of these components is divided up into nonspecific mechanisms, those which are **innate** to an organism, and responsive responses, which are **adaptive** to specific pathogens. Fundamental or classical immunology involves studying the components that make up the innate and adaptive immune system.







