

**D.K.M COLLEGE FOR WOMEN (AUTONOMOUS)  
VELLORE – 1**



**EQUAL OPPORTUNITY CELL**

**(A Cell that Comprises of Minority Cell, OBC Cell and the Committee  
for SC/ST)**



**REPORT  
FOR THE  
ACADEMIC YEAR 2019-2020**

## **EQUAL OPPORTUNITY CELL**

**(A Cell that Comprises of Minority Cell, OBC Cell and the Committee for SC/ST)**

### **1.1 DETAILS OF COORDINATORS**



**COORDINATOR FOR DAY COLLEGE**

**NAME: DR.T.Bharathi**

**DESIGNATION : Assistant Professor of Commerce**



**COORDINATOR FOR EVENING COLLEGE**

**NAME: Ms.J.Janani**

**DESIGNATION : Assistant Professor of Commerce**

## **1.2 ACTION PLAN**

### **ACADEMIC YEAR**

**2019-20**

- Guidance to students on various scholarships available to them.
- Seminar on Equal Employment Opportunity.

## **1.3 IMPLEMENTATION OF THE ACTION PLAN**

### **ACADEMIC YEAR 2019-20**

#### **1.3.1. THEME: GUIDANCE ON VARIOUS SCHOLARSHIPS**

**DATE: 25.09.19**

#### **PROGRAMME - AN OVERVIEW**

Equal Opportunity Cell of our college organized a guidance programme to the marginalized students on various scholarships available to them on Wednesday, the 25 September 2019 at 11.30 am. Welcome address and introduction to the Resource Person was given by **Dr.T.Bharathi**, Assistant Professor of Commerce and Co-ordinator for the Equal Opportunity Cell.

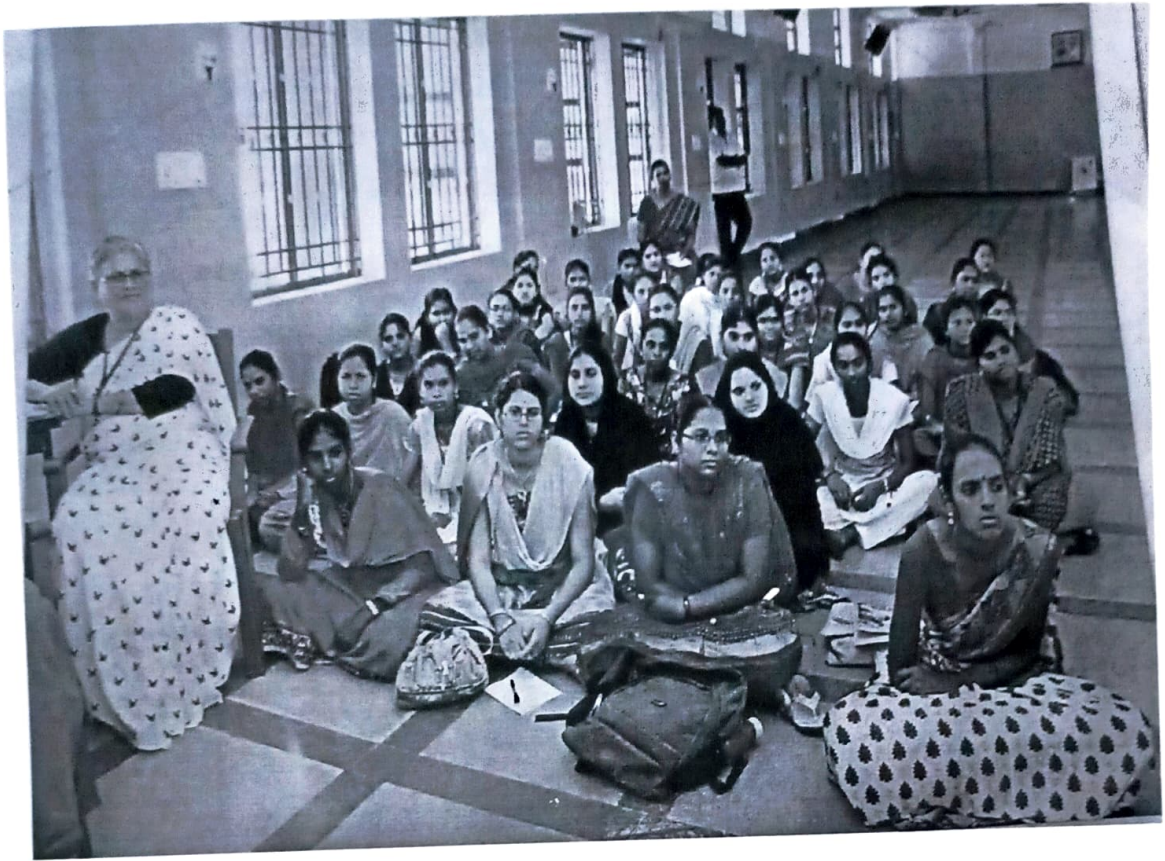
Dr.K.Ameenal Bibi, Associate Professor of Mathematics, DKM College for Women, Vellore guided the students on various scholarships available to them. This guidance programme really created an awareness to the students on the various scholarships.

Students were very much impressed upon the programme. The students were given opportunity to interact and discuss on scholarships.

The vote of Thanks for the programme was delivered by **Ms.J.Janani**, Assistant Professor of Commerce.

Nearly 40 students benefitted out of this programme.

## PHOTOGRAPHIC EVIDENCE



### 1.4 OUR FUTURE PROPOSALS

- To organize NET/SET coaching classes for the marginalized students pursuing post graduate degrees.
- To organize a programme on Gender Equality.

*P. N. G.*  
*Principal*  
D.K.M. COLLEGE FOR WOMEN  
VELLORE - 632 001.